

# VideoLab 7.5

## .NET Quick Start



[www.openwire.org](http://www.openwire.org)  
[www.mitov.com](http://www.mitov.com)

Copyright Boian Mitov 2004 - 2014

# Index

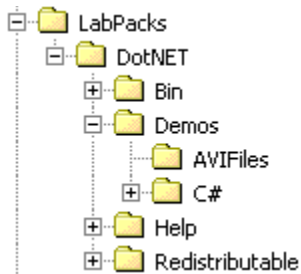
Installation.....	3
Where is VideoLab?.....	3
Creating a new VideoLab project in Visual C#.....	3
Installing the components on the Toolbox.....	5
Adding the necessary assembly references to your application.....	7
Creating a simple video player using DirectShow components.....	8
Distributing your application.....	10
Deploying your 32 bit application with the IPP DLLs.....	11
Deploying your 64 bit application.....	11

## Installation

VideoLab comes with an installation program. Just start the installation by double-clicking on the Setup.exe file and follow the installation instructions.

## Where is VideoLab?

After the installation VideoLab is located under a single root directory. The default location is C:\Program Files\LabPacks or C:\Program Files (x86)\LabPacks on 64 bit systems. During the installation the user has the option to select alternative directory. Here is how the directory structure should look like after the installation:



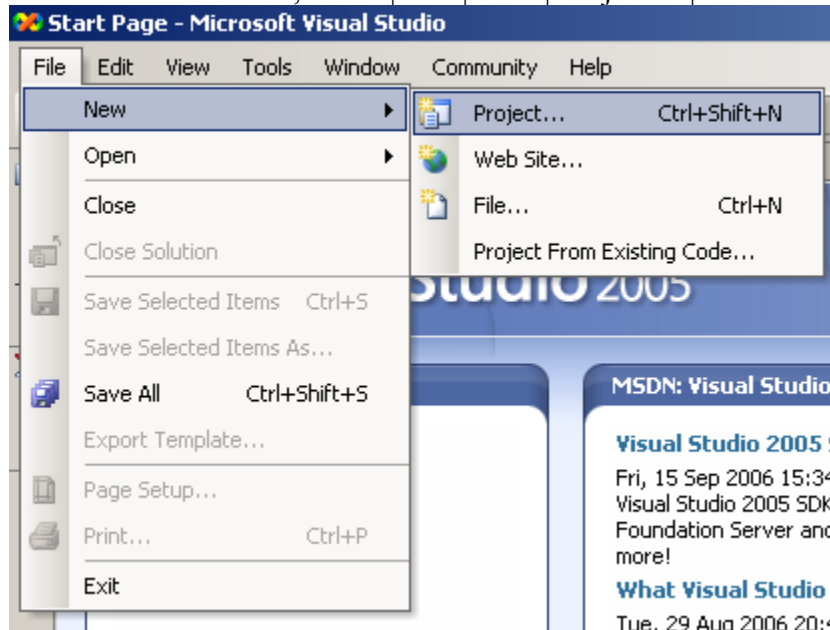
Under the “Demos” directory are located the demo files. The help files and the documentation are located under the “Help” directory. The component .NET 2.0/3.5/4.0 assemblies and the redistributable DLL files are located under the “Bin” directory. It is a great idea to start by opening and compiling the demo files. The demo projects were developed with Visual C# 2005.

## Creating a new VideoLab project in Visual C#

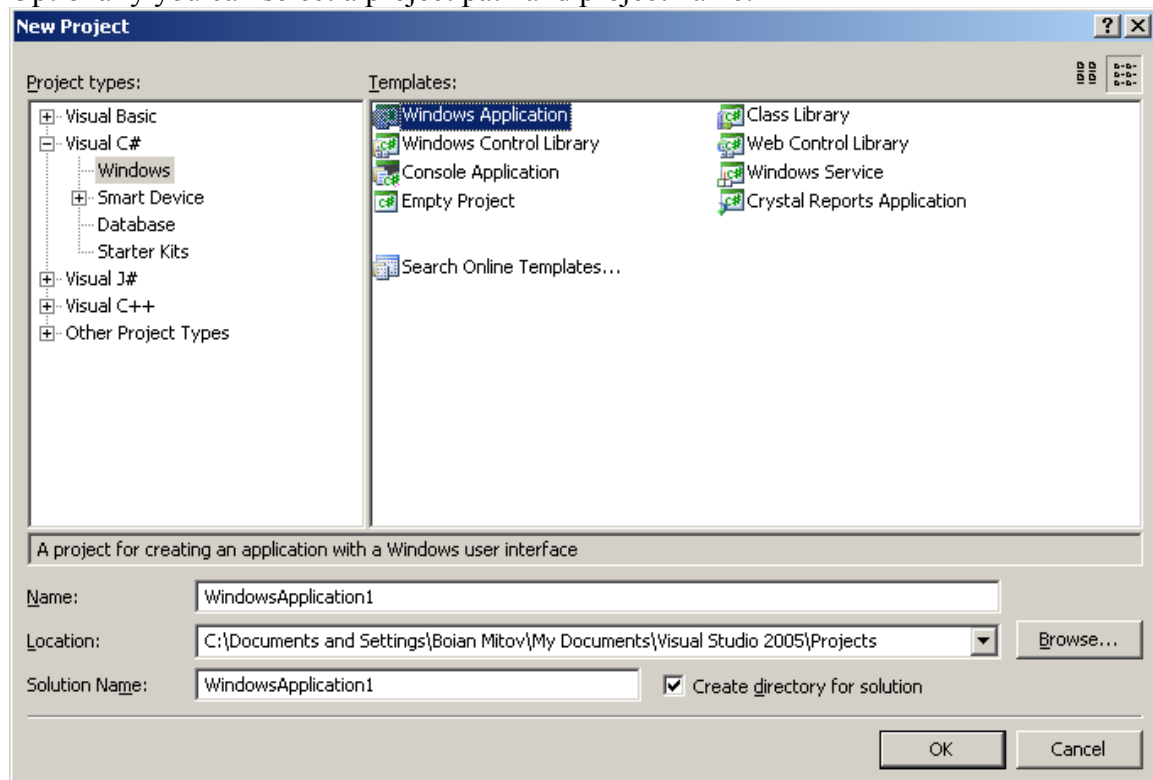
All of the examples in this manual start with creating a C# Windows .NET based project. The following chapters will assume that you have created the project and will teach you how to add specific VideoLab functionality.

Start by creating a new project.

From the VC++ menu, select | File | New | Project... |



In the "New Project" dialog select | Visual C# | Windows Application |  
Optionally you can select a project path and project name:



Click OK.

## Installing the components on the Toolbox

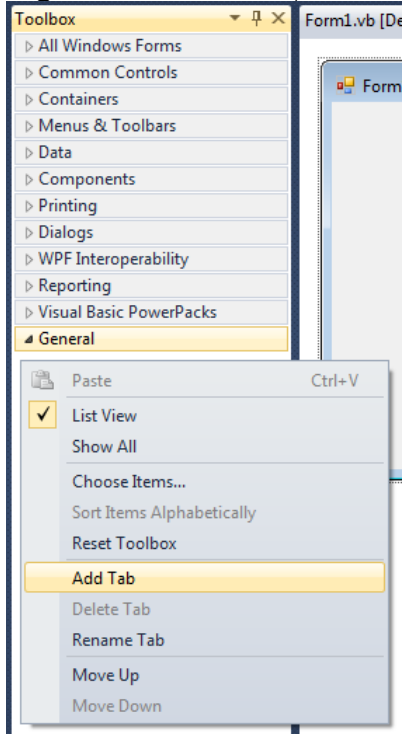
Before using the components in your project, you will have to install them on the component Toolbox.

The install in version 3.1 and up will automatically install the components on the toolbar, however if it fails, or if you have selected not to do so during the installation, here is a way to install the components manually:

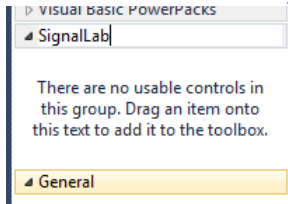
We assume that you have already created a project, and the toolbox with the .NET components has appeared.

Open the component toolbox and expand the General section.

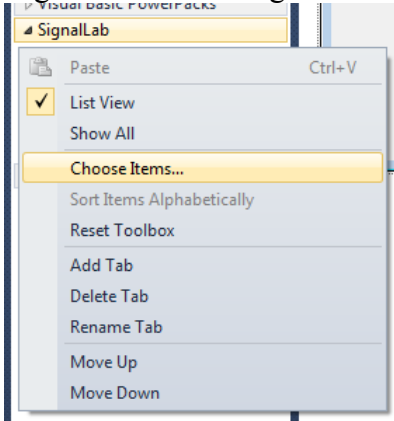
Right-click and select **Add Tab** from the menu:



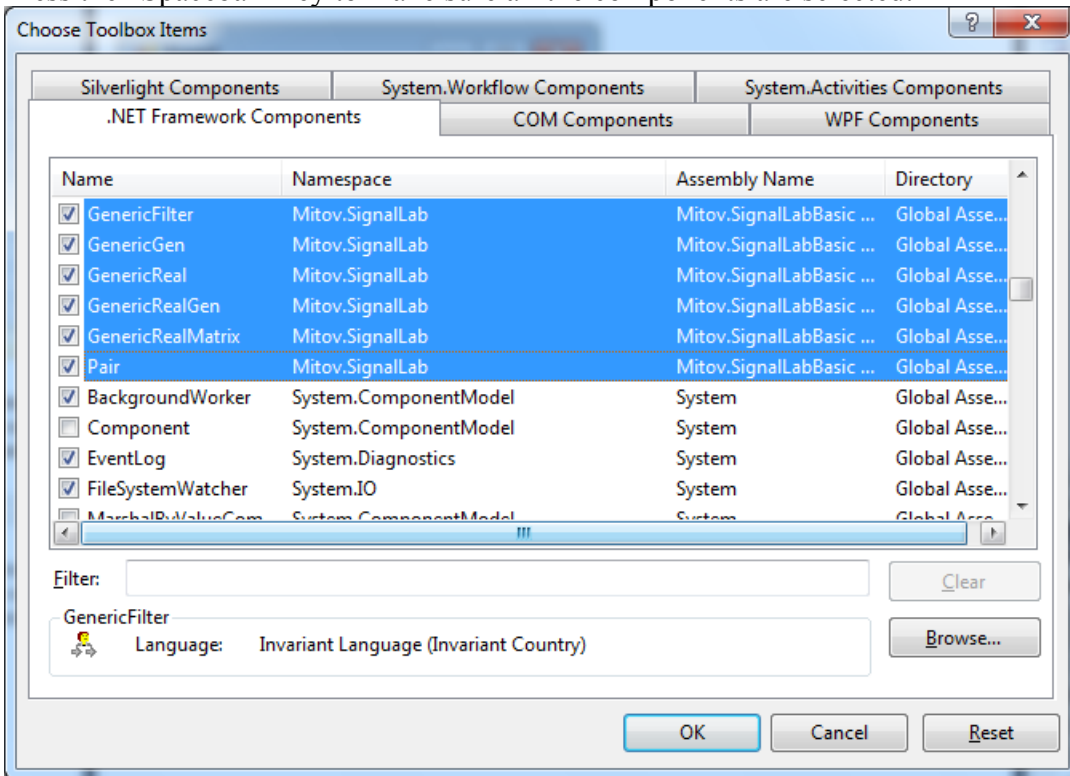
Name the new tab “SignalLab”:



Right-click on the SignalLab tab and select [Choose Items...] from the menu:

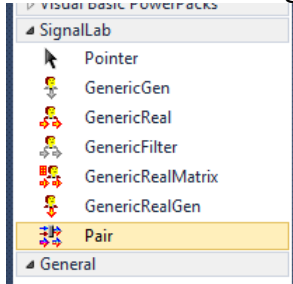


In the “Choose Toolbox Items” dialog select the components that belong to the Mitov.SignalLabBasic.DLL (You can order the components by “Assembly Name”). Press the “Spacebar” key to make sure all the components are selected:



Click OK.

You should see the SignalLabBasic components on your toolbox:



Close and restart the Visual Studio IDE, then reopen the project.

On the “SignalLab” tab install Mitov.SignalLabAdditional.dll.

Repeat the same steps adding 4 more tabs named “PlotLab” “MediaLab”, “AudioLab”, and “VideoLab”.

On the “SignalLab” tab install Mitov.SignalLabAdditional.dll.

On the “PlotLab” tab install Mitov.PlotLabBasic.dll.

On the “TimingLab” tab install Mitov.TimingLabBasic.dll.

On the “MediaLab” tab install Mitov.MediaLabBasic.dll.

On the “AudioLab” tab install Mitov.AudioLabBasic.dll.

On the “VideoLab” tab install Mitov.VideoLabBasic.dll, Mitov.VideoLabAdditional.dll and Mitov.VideoLab.dll.

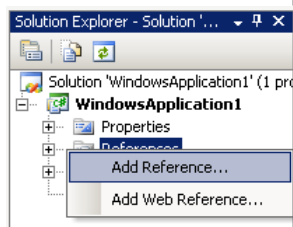
Now you can start using the components in your .NET development.

## Adding the necessary assembly references to your application

Visual studio will automatically add the assemblies being referenced when adding components to the project. If this mechanism fails, you can manually add the necessary assemblies as shown here:

In the “Solution Explorer” select the “References” node and right-click on it.

From the menu select |Add Reference...|



Navigate to the Select the Mitov.VideoLabBasic.dll from the LabPacks\Bin\2.0 subdirectory and add the necessary assemblies.

Here is the list of necessary assemblies:

- For Mitov.BasicLab.DLL – None.
- For Mitov.SignalLabBasic.DLL:
  - a. Mitov.BasicLab.DLL

- For Mitov.SignalLabAdditional.DLL:
  - a. Mitov.BasicLab.DLL
- For Mitov.TimingLabBasic.DLL:
  - a. Mitov.BasicLab.DLL
- For Mitov.PlotLabBasic.DLL:
  - a. Mitov.BasicLab.DLL
- For Mitov.MediaLabBasic.DLL:
  - a. Mitov.BasicLab.DLL
- For Mitov.AudioLabBasic.DLL:
  - a. Mitov.BasicLab.DLL
- For Mitov.VideoLabBasic.DLL:
  - a. Mitov.AudioLabBasic.DLL
  - b. Mitov.BasicLab.DLL
- For Mitov.VideoLabAdditional.DLL:
  - a. Mitov.VideoLabBasic.DLL
  - b. Mitov.AudioLabBasic.DLL
  - c. Mitov.BasicLab.DLL
- For Mitov.VideoLab.DLL:
  - a. Mitov.VideoLabBasic.DLL
  - b. Mitov.VideoLabAdditional.DLL
  - c. Mitov.AudioLabBasic.DLL
  - d. Mitov.BasicLab.DLL

## Creating a simple video player using DirectShow components

**WARNING:** In order to run the application in this example you must have DirectX 9.0 or higher installed! This is very much true for most modern systems, however we will recommend checking to make sure your system is up to date.

Create and setup a new project as described in the “Creating a new VideoLab project in Visual C#” chapter.

From the “VideoLab” tab on the Toolbox select and drop on the form the following two components:



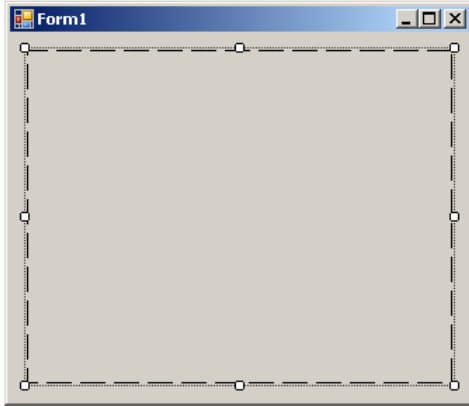
- DSVideoPlayer



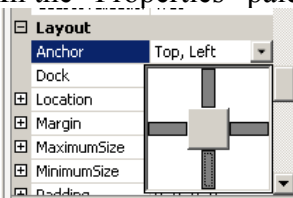
- DSImageDisplay



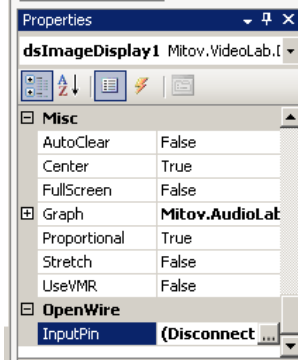
Place the component on the form and arrange it as shown here:



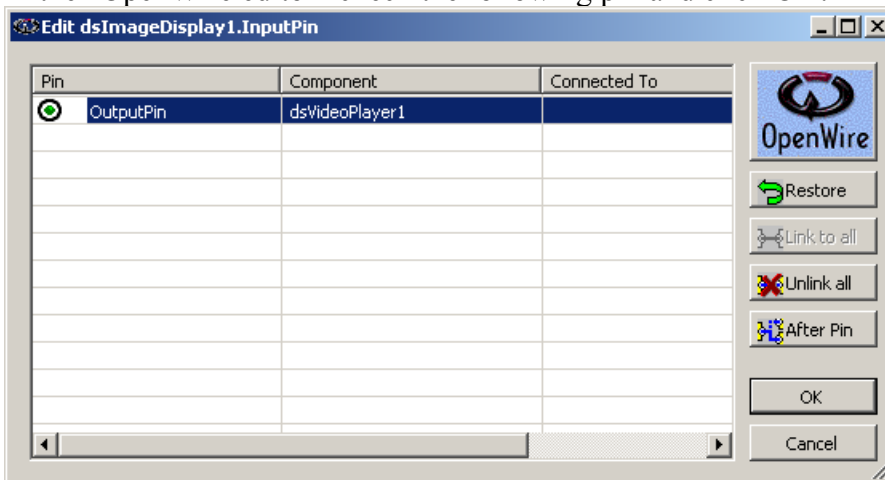
In the “Properties” palette set the Anchor property as shown here:



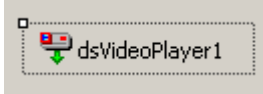
In the “Properties” palette go to the “InputPin” property and click on the “...” button:



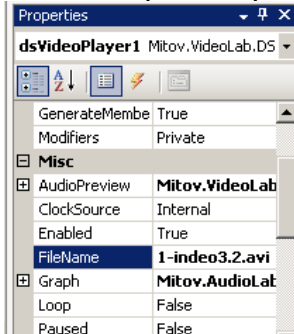
In the “OpenWire editor” check the following pin and click OK:



Select the dsVideoPlayer1 component on the form editor:



In the “Properties” palette go to the “FileName” property and set a video file to play:

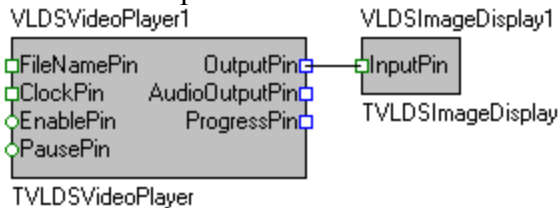


Compile and run the application. You should see result similar to this one:



Congratulations! You have just created your first VideoLab application.

Here are the OpenWire connections in this application:



## Distributing your application

Once you have finished the development of your application you most likely will need to distribute it to other systems. Version 5.0.2 and higher of the library will move all the necessary DLL files in the Release directory of your project. You will only need to distribute the files in the directory. To use this feature, make sure that the “Copy Local” property is set for all the assemblies from the library. Please check with the Visual Studio help for your version of Video Studio on how to configure assemblies as private assemblies.

## Deploying your 32 bit application with the IPP DLLs

The compiled applications can be deployed to the target system by simply copying the executable. The application will work, however the performance can be improved by also copying the Intel IPP DLLs provided with the library.

The DLLs are under the [install path]\LabPacks\IppDLL\Win32 directory( [install path] is the location where the library was installed).

In 32 bit Windows to deploy IPP, copy the files to the [Windows]\System32 directory on the target system.

In 64 bit Windows to deploy IPP, copy the files to the [Windows]\SysWOW64 directory on the target system.

[Windows] is the Windows directory - usually C:\WINNT or C:\WINDOWS

This will improve the performance of your application on the target system.

## Deploying your 64 bit application

The current version of the library requires when deploying 64 bit applications, the Intel IPP DLLs to be deployed as well.

The DLLs are under the [install path]\LabPacks\IppDLL\Win64 directory( [install path] is the location where the library was installed).

To deploy IPP, copy the files to the [Windows]\System32 directory on the target system.

[Windows] is the Windows directory - usually C:\WINNT or C:\WINDOWS

This will improve the performance of your application on the target system.